



Details

general

nationality: [british](#)
 purpose: [transport](#)
 type: [tanker](#)
 propulsion: [steamer](#)
 date built: 1918
 status: [live](#) [+](#)

details

weight (tons): 5571 grt
 dimensions: 121,9 × 15,9 × 8,7 m
 engine: 3 Cyl. Triple expansion engine by Richardsons Westgarth, Hartlepool, England.
 power: 546 n.h.p.
 speed: 11 knots

about the loss

cause lost: [air raid](#)
 date lost: [09/04/1942](#) [dd/mm/yyyy]
 casualties:

about people

- builder: [UK Irvine Shipbuilding & Drydock Co. Ltd., West Hartlepool \(Sunderland\)](#)
- next owners
- [1] [UK Tankers Ltd., London](#)
[SS Athelstane](#)
 period: 1941 ~ 1942
- last owner:
- [2] [UK Athel Line, London](#)
[SS Athelstane](#)
 period: 1939 ~ 1941
- prev. owners:
- [3] [UK United Molasses Co. Ltd. \(British Molasses, Athel Line\), London](#)
[SS Athelstane](#)
 period: 1936 ~ 1939
- [4] [NO Aarvold G. O. & Co., Oslo \(old Christiania\)](#)
[SS Hird](#)
 period: 1930 ~ 1936
- [5] [UK United Molasses Co. Ltd. \(British Molasses, Athel Line\), London](#)
[SS Athelfoam](#)
 period: 1926 ~ 1930
- [6] [UK United Molasses Co. Ltd. \(British Molasses, Athel Line\), London](#)
[SS Athelfoam](#)
 period: 1925 ~ 1926
- [7] [UK Anglo-Saxon Petroleum Co. Ltd., London](#)
[SS Caprella](#)
 period: 1920 ~ 1925
- [8] [UK The Shipping Controller \(Uk\), London](#)
[SS ar Ghurka](#)
 period: 1918 ~ 1920

captain:

about the wreck

depth: 55 max. / -- min. (m)
 orientation:
 protected:
 war grave:

updates

entered by: [Vleqqeert Nico](#)
 entered: 23/02/2008
 last update: [Vleqqeert Nico](#)
 last update: 10/04/2010

Position

[more positions](#)

[Vleqqeert Nico](#) 23/02/2008

latitude: 07°30'00" N
 longitude: 081°56'00" E
 division: 1' = 60"

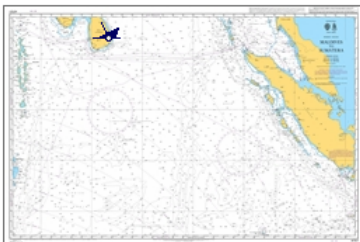
[add position to my marks](#)

show neighbour. wrecks: [members only](#)

[check AIS](#)

[insert new position](#)

Pictures



[Lettens Jan](#) 22/10/2009

[Maldives-Sumatra](#)

This is a thumbnail version of the chart **Maldives-Sumatra**. You do not have sufficient rights to see this chart in full resolution [11693x7440 pixels]. Click [this link](#) to subscribe to this service.



[insert new picture](#)

History

[Lettens Jan](#) 12/12/2009

On 9th April, Japanese Operation C continues. The Japanese carrier striking force (Vice Admiral Nagumo Chuichi) raids Trincomalee, Ceylon, which has been cleared of shipping in expectation of the attack.

Despite the precautions taken by the British, Japanese carrier bombers attack the ships they find returning to Trincomalee.

British carrier HMS [Hermes](#) is sunk, as is Australian destroyer HMAS [Vampire](#), British corvette HMS [Hollyhock](#), depot ship HMS [Athelstane](#) and RFA oiler [British Sergeant](#).

ref. [Cressman R. J., Official Chronology of the U.S. Navy in WWII](#)

[Vleqqeert Nico](#) 10/09/2009

The British tanker [Athelstane](#) was bombed and sunk by Japanese aircraft while serving as a Royal Fleet Auxiliary.

ref. used: [www.mariners-l.co...](#)

[insert new history](#)

Documents

[insert new document](#)

About Owner(s)

[The Shipping Controller \(Uk\), London](#)

The position of Controller-General of Merchant Shipbuilding was created for Lord Pirrie at a time when merchant shipbuilding in the United Kingdom was in a very unsatisfactory state and a stimulus to increased production was urgently needed. He went to the Admiralty without any staff, and, as a war measure, a large number of standard cargo steamers were built in British yards under his authority and with his active management. The standard ships, for which the original programme had been laid down by the Shipping Controller, were built for account of the State and have since been sold to the shipping industry. Lord Pirrie on his appointment gave close attention to the speedy repairing of torpedoed ships and improved the organization.

Related wreck(s)

[related by histories:](#)

- [British Sergeant SS \[+1942\]](#)
- [Hermes HMS \(95\) \[+1942\]](#)
- [Hollyhock HMS \(K64\) \[+1942\]](#)
- [Vampire HMAS \[D68\] \[+1942\]](#)



LAT: 14°38,2XXN LON: 105°52,3XXE

